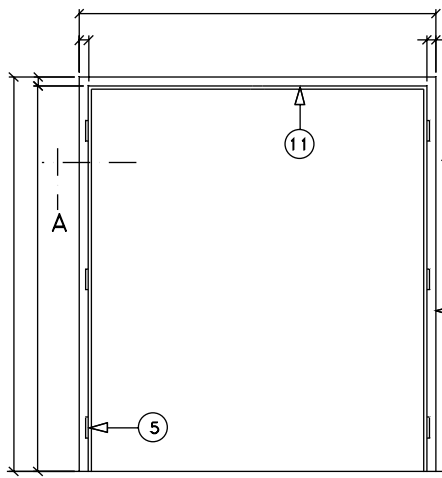


BLAST RESISTANT DOOR HARDWARE CHART

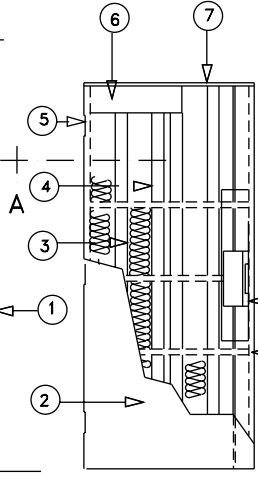
LEGEND

1. FULLY WELDED BLAST RESIST/
2. REINFORCE FOR EXTRA HEAVY DUTY MULTI POINT MORTISE LOCK AND STRIKE (SEE CHART)
3. QUANTITY OF HORIZONTAL AND VERTICAL STRUCTURAL MEMBERS VARIES IN ACCORDANCE WITH PRESSURE LEVEL AND SIZE.
4. SEMI-RIGID FIBERGLASS INSULATION TO FILL ALL VOIDS
5. REINFORCE FOR MORTISE HINGES (SEE CHART)
6. REINFORCE FOR SURFACE APPLIED CLOSER
7. INVERTED CHANNELS TO CLOSE TOP AND BOTTOM OF DOOR
8. REINFORCE FOR EXTRA HEAVY DUTY MULTI POINT MORTISE LOCK AND STRIKE (SEE CHART)
9. QUANTITY OF HORIZONTAL AND VERTICAL STRUCTURAL MEMBERS VARIES IN ACCORDANCE WITH PRESSURE LEVEL AND SIZE.
10. REINFORCE INACTIVE DOOR AND FRAME FOR HEAVY DUTY FLUSH BOLTS (SEE CHART FOR DIA.)
11. ASTRAGAL ATTACHED TO ACTIVE DOOR

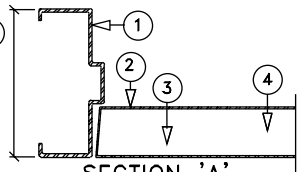
OPENING WIDTH (INCHES)	OPENING HEIGHT (INCHES)	BLAST RESISTANT DOOR HARDWARE CHART			
		UP TO 84	>84-90	>90-108	>108-120
55-72	WEIGHT (LBS)	175-190	200-160	220	260
	THICKNESS	1 3/4"	1 3/4"	1 3/4"	1 3/4"
HINGES/LEAF	QTY.3-STD HD				
	LATCHES INACTIVE DR.	2 BOLTS-1/2"	2 BOLTS-1/2"	2 BOLTS-1/2"	2 BOLTS-1/2"
LATCHES ACTIVE DR.	3PT MULTI POINT				
	ASTRAGAL	FLAT	FLAT	FLAT	FLAT
>72-84	WEIGHT (LBS)	200-175	260-195	285	360
	THICKNESS	1 3/4"	1 3/4"	1 3/4"	1 3/4"
HINGES/LEAF	QTY.3-STD HD				
	LATCHES INACTIVE DR.	2 BOLTS-1/2"	2 BOLTS 1/2"-5/8"	2 BOLTS-1/2"	2 BOLTS-1/2"
LATCHES ACTIVE DR.	3PT MULTI POINT				
	ASTRAGAL	FLAT	FLAT	FLAT	FLAT
>84-96	WEIGHT (LBS)	270-210	230	350	410
	THICKNESS	1 3/4"	1 3/4"	1 3/4"	1 3/4"
HINGES/LEAF	QTY.3-SUPER HD				
	LATCHES INACTIVE DR.	2 BOLTS-1/2"	2 BOLTS-1/2"	2 BOLTS-1/2"	2 BOLTS 1/2"-5/8"
LATCHES ACTIVE DR.	3PT MULTI POINT				
	ASTRAGAL	FLAT	FLAT	FLAT	FLAT
>96-110	WEIGHT (LBS)	300-240	290	395	460
	THICKNESS	1 3/4"	1 3/4"	1 3/4"	1 3/4"
HINGES/LEAF	QTY.3-SUPER HD				
	LATCHES INACTIVE DR.	2 BOLTS 1/2"-5/8"	2 BOLTS-1/2"	2 BOLTS 1/2"-5/8"	2 BOLTS 1/2"-5/8"
LATCHES ACTIVE DR.	3PT MULTI POINT				
	ASTRAGAL	FLAT	FLAT	FLAT	FLAT



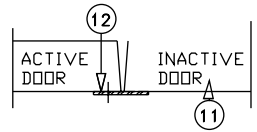
FRAME ELEVATION



DOOR ELEVATION



SECTION 'A'



BLAST RESISTANT DOUBLE DOORS & FRAME - 2 P.S.I.

JOB NO: _____
 SHEET: _____ OF: _____