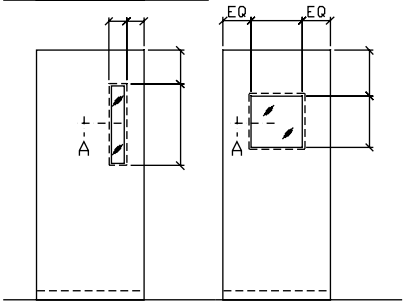
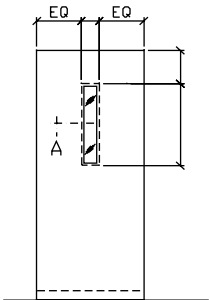


NOTE: THESE DRAWINGS ARE ISSUED FOR GENERAL INFORMATION ONLY AND ARE NOT INTENDED FOR MODIFICATION. FOR FURTHER INFORMATION PLEASE CONSULT OUR SALES OR ENGINEERING DEPARTMENTS.

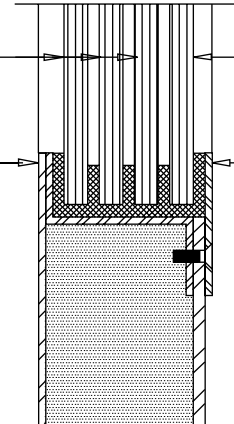


ELEVATIONS

ALL DIMENSIONS SHOWN REFER TO DOOR CUTOUT SIZES

3 LAYERS OF CLEAR ACOUSTIC GLASS

FIXED STOP ON THE SECURE SIDE (LOCK CYLINDER SIDE) OF THE DOOR



CLEAR ACOUSTIC OR GEORGIAN WIRE GLASS (PLEASE SPECIFY). WIRED GLASS WILL BE USED AUTOMATICALLY IF THE OPENING IS FIRE RATED

REMOVABLE STOP

SECTION 'A'

NOTE: ALL GLASS TO BE FACTORY INSTALLED BY AMBICO. MAXIMUM GLASS SIZE NOT TO EXCEED 300 SQUARE INCHES. STOCK GLASS SIZES ARE 5'x20' OR 17'x17'