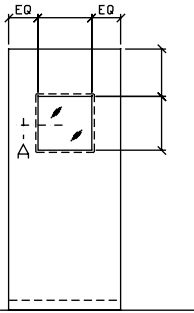
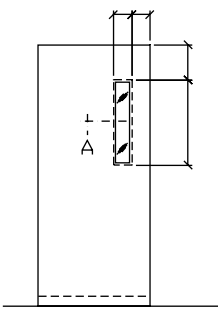
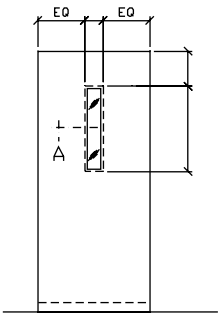


NOTE: THESE DRAWINGS ARE ISSUED FOR GENERAL INFORMATION ONLY AND ARE NOT INTENDED FOR MODIFICATION. FOR FURTHER INFORMATION PLEASE CONSULT OUR SALES OR ENGINEERING DEPARTMENTS.



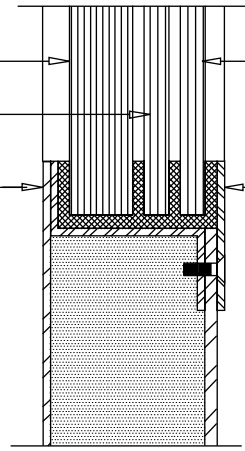
CLEAR ACOUSTIC GLASS

CLEAR ACOUSTIC GLASS

FIXED STOP ON THE SECURE SIDE (LOCK CYLINDER SIDE) OF THE DOOR

CLEAR ACOUSTIC OR GEORGIAN WIRE GLASS (PLEASE SPECIFY). WIRED GLASS WILL BE USED AUTOMATICALLY IF THE OPENING IS FIRE RATED

REMOVABLE STOP



SECTION 'A'

ELEVATIONS

ALL DIMENSIONS SHOWN REFER TO DOOR CUTOUT SIZES

NOTE: ALL GLASS TO BE FACTORY INSTALLED BY AMBICO. MAXIMUM GLASS SIZE NOT TO EXCEED 300 SQUARE INCHES. STOCK GLASS SIZES ARE 5'x20' OR 17'x17'