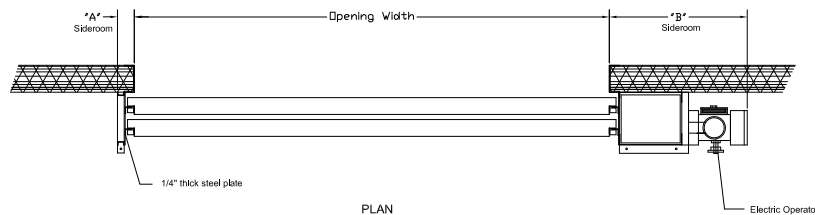


INTERIOR ELEVATION

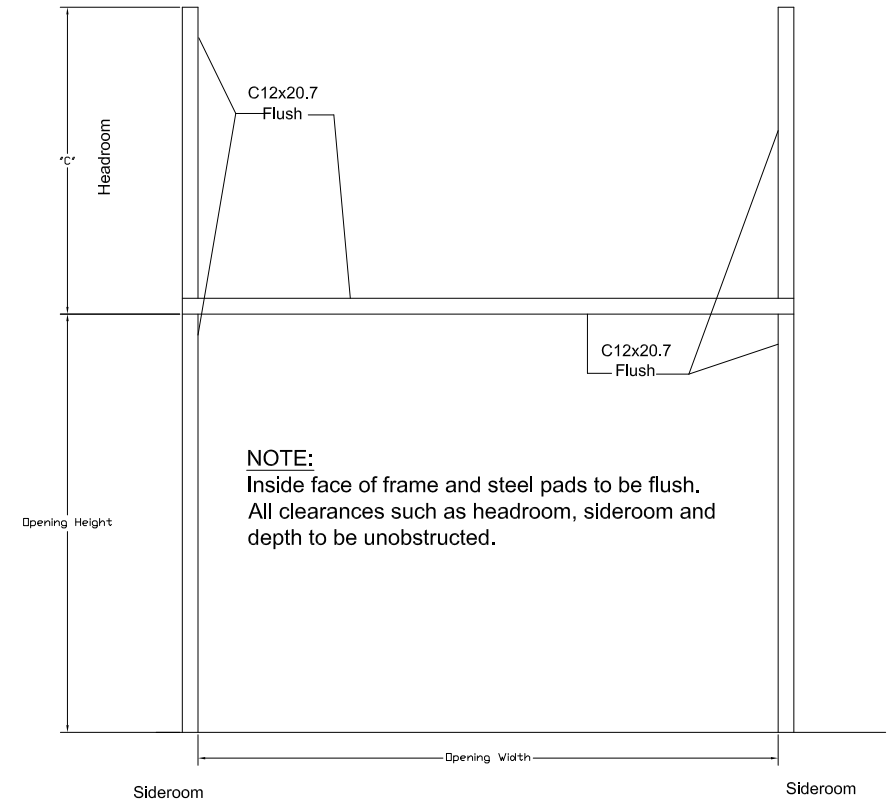
SECTION



PLAN

**NOTES:**

1. DIMENSIONS MAY VARY TO SUIT SPECIFIC SITE CONDITIONS.
2. ELECTRICAL ACCESSORIES IN COMPLIANCE WITH SECTION.
3. NUMBER OF SECTIONS CAN BE ADJUSTED TO SUIT HEADROOM REQUIREMENTS.



**NOTE:**

Inside face of frame and steel pads to be flush.  
All clearances such as headroom, sideroom and depth to be unobstructed.

STEEL FRAME BY OTHERS

ITEM	QTY	DOOR No	CLEAR OPENING			No OF PANEL	No OF SECTION	SIDEROOM				DEPTH	OPERATION	ELECTRIC OPERATOR					LOCATION OF WEIGHT BOX		FRAME	REMARKS		
			WIDTH	HEIGHT	THICK			A	B	C	D			MODEL	H.P.	V.	PH.	HZ.	MOUNTING	LEFT			RIGHT	
1	1		10'0"	12'0"	2"	—	2	5"	43"	84"	16"	22"	ELECTRIC	GH	1	3	60	Side	—	✓	Steel			
2	1		12'0"	12'0"	2"	—	3	5"	43"	72"	24"	24"	ELECTRIC	GH	1	3	60	Side	—	✓	Steel			